

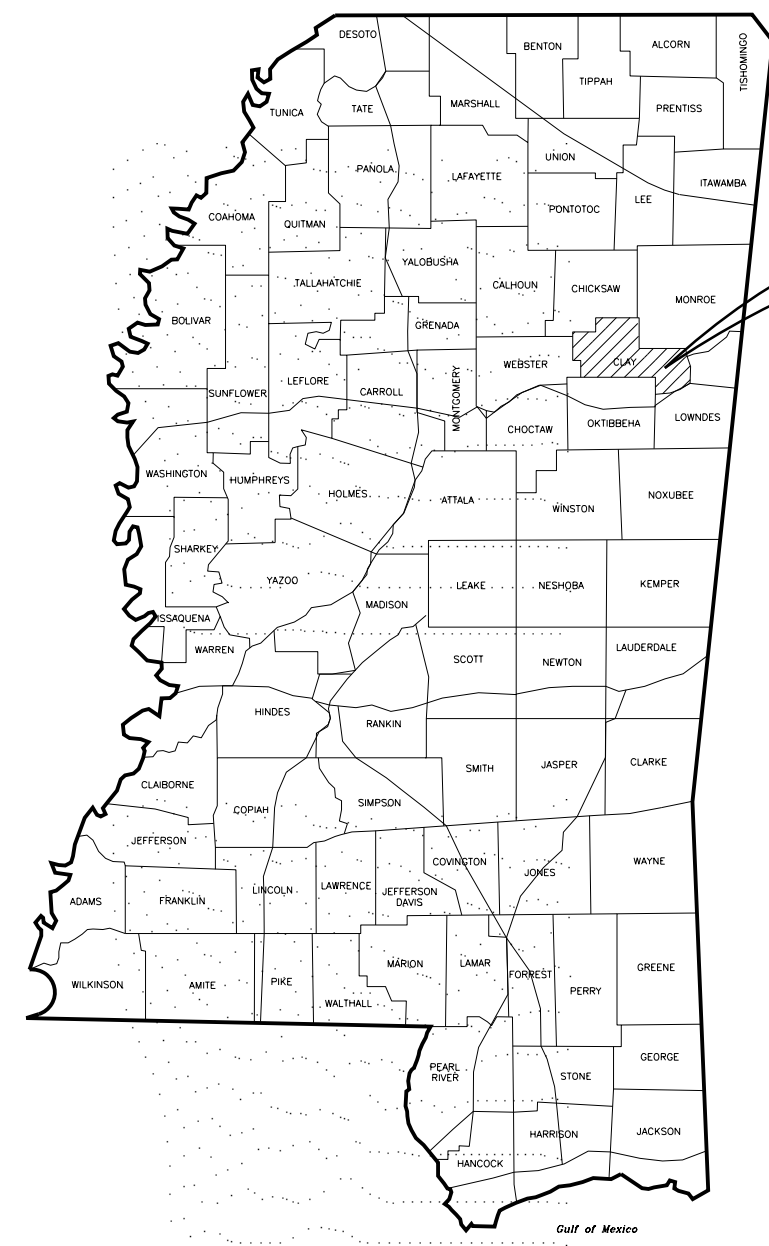
# AIRPORT LAYOUT PLAN FOR THE McCHAREN FIELD AIRPORT WEST POINT, MISSISSIPPI

**BWSC**

APR 14, 2017  
PROJECT No.  
36096-01

## INDEX OF DRAWINGS

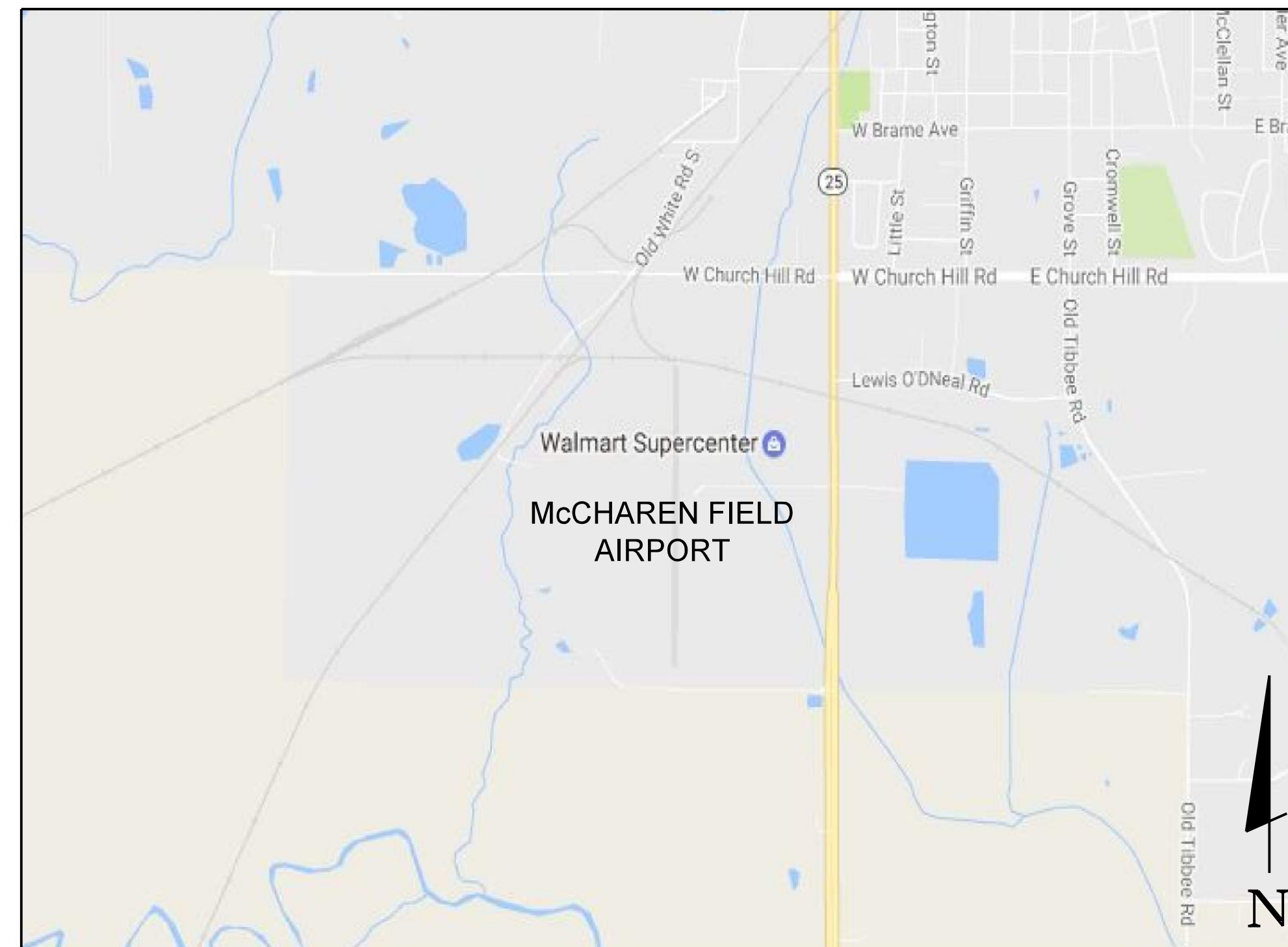
Sheet No.	Description	Revision #	Revision Date
1	TITLE SHEET		
2	AIRPORT LAYOUT DRAWING		
3	TERMINAL AREA DRAWING		
4	PART 77 AIRSPACE DRAWING		
5	AIRPORT AIRSPACE DETAIL		
6	RUNWAY 18 INNER APPROACH DRAWING		
7	RUNWAY 36 INNER APPROACH DRAWING		
8	RUNWAY 18 DEPARTURE SURFACE DRAWING		
9	RUNWAY 36 DEPARTURE SURFACE DRAWING		
10	DEPARTURE SURFACE DATA TABLES		
11	RUNWAY 18-36 PROFILE		
	EXHIBIT "A" PROPERTY MAP		



AIRPORT  
LOCATION

### LOCATION MAP

NOT TO SCALE



Walmart Supercenter  
McCHAREN FIELD  
AIRPORT

### VICINITY MAP

NOT TO SCALE

### AIRPORT SPONSOR APPROVAL

Approved By :

Honorable Robbie Robinson, Mayor

Date

**AIRPORT LAYOUT PLAN  
FOR THE  
McCHAREN FIELD AIRPORT  
WEST POINT, MISSISSIPPI  
A.I.P. PROJECT NO. 3-28-0077-013-2016**

**BWSC** | **BARGE  
WAGGONER  
SUMNER &  
CANNON, INC.**

2047 West Main Street, Suite 1, Dothan, Alabama 36301  
PHONE (334) 793-6266 FAX (334) 793-4459

*Clearwater Consultants, Inc.  
Environmental Engineers*



316 University Drive  
Post Office Box 1328  
Starkville, Mississippi 39760

Telephone (662) 323-8000  
Fax (662) 323-2200

6/5/2017  
3:42:05 PM  
\$ INSTR\$  
\$ USER\$  
\$ TBL\$

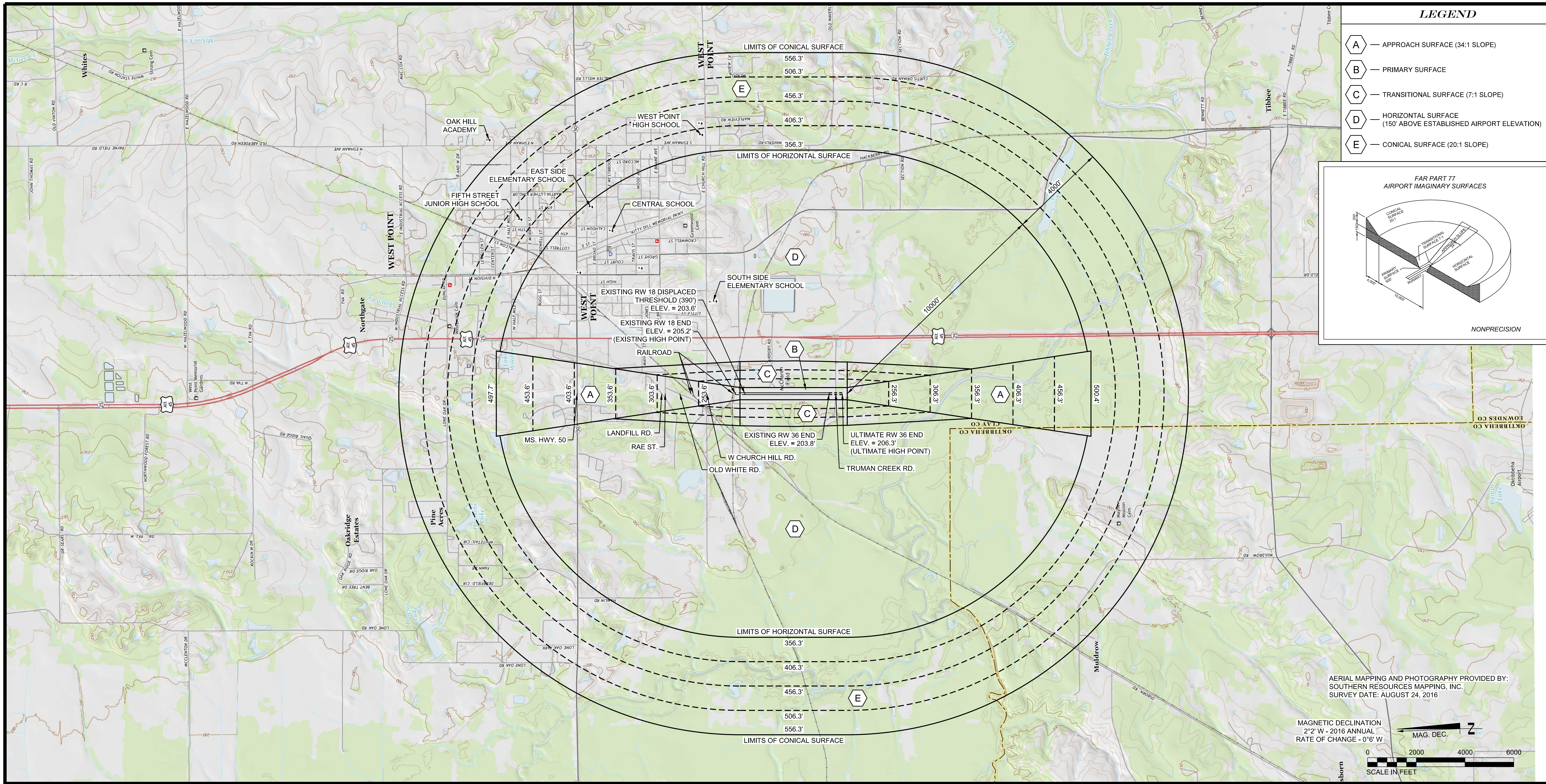




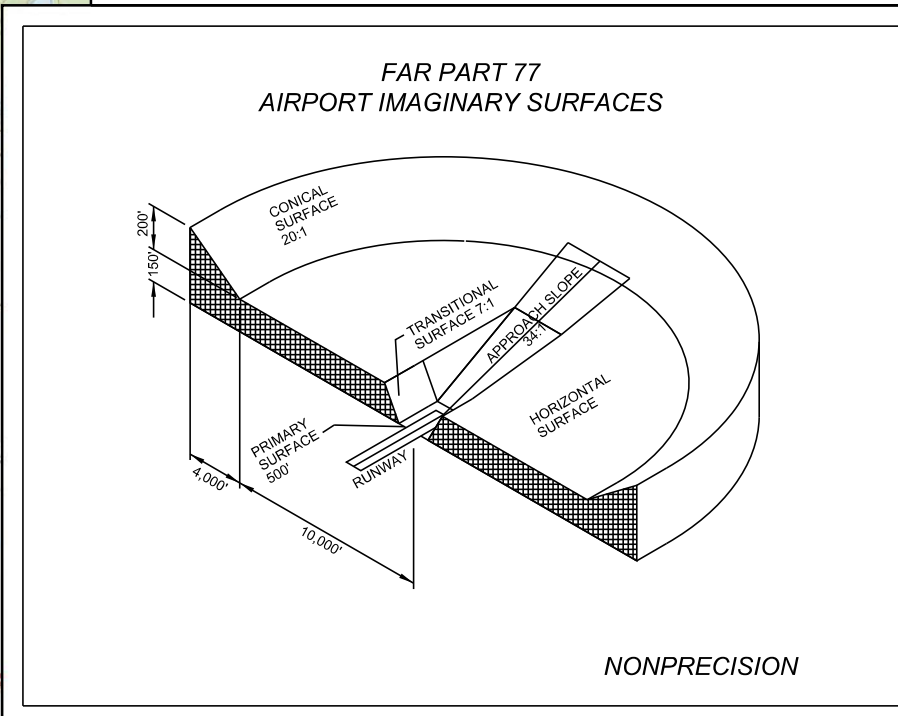




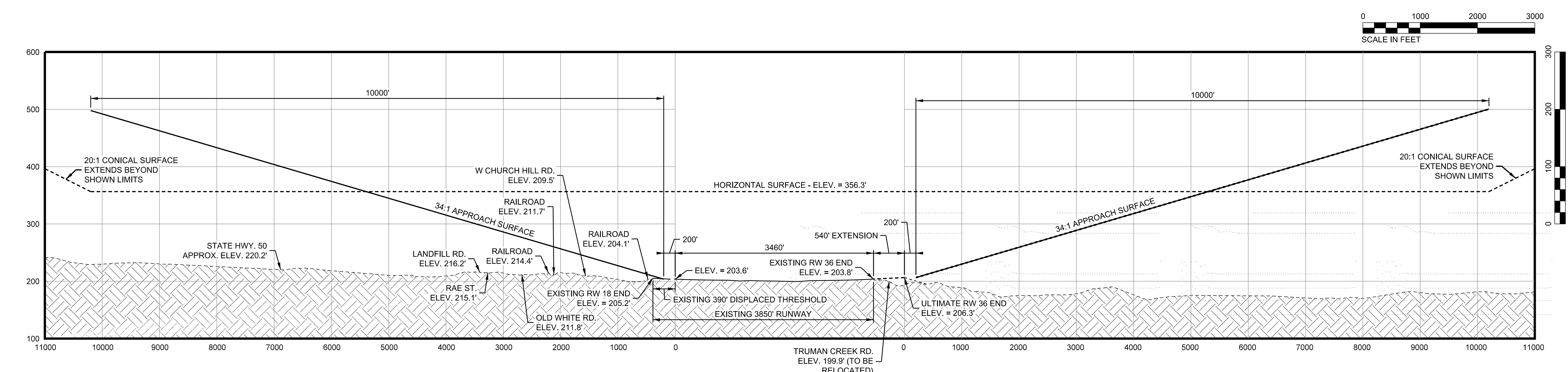
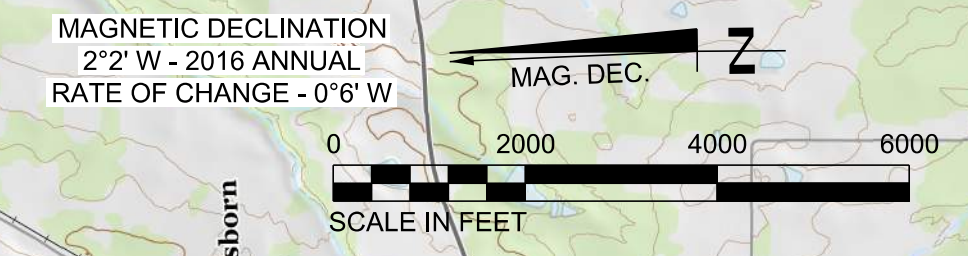




- LEGEND**
- A — APPROACH SURFACE (34:1 SLOPE)
  - B — PRIMARY SURFACE
  - C — TRANSITIONAL SURFACE (7:1 SLOPE)
  - D — HORIZONTAL SURFACE (150' ABOVE ESTABLISHED AIRPORT ELEVATION)
  - E — CONICAL SURFACE (20:1 SLOPE)



AERIAL MAPPING AND PHOTOGRAPHY PROVIDED BY:  
SOUTHERN RESOURCES MAPPING, INC.  
SURVEY DATE: AUGUST 24, 2016



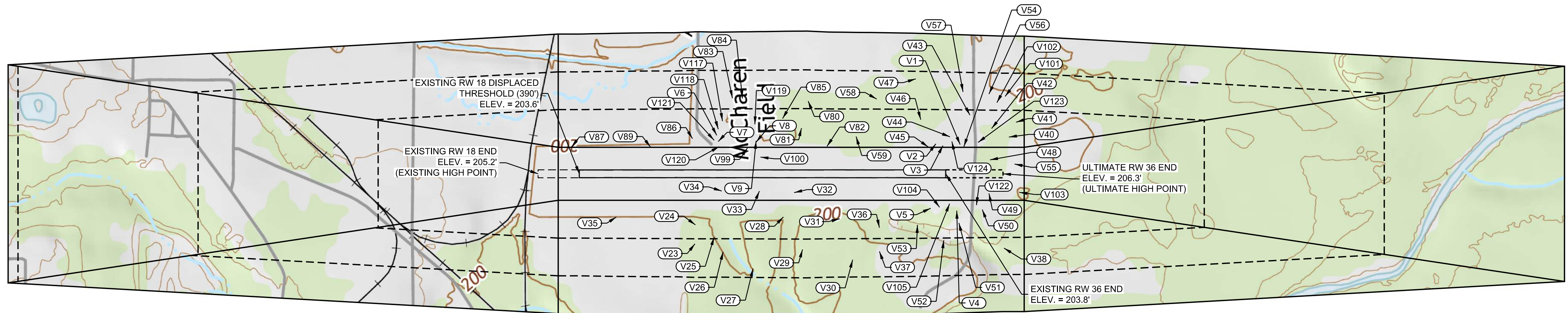
**BWSC**  
BARGE WAGGONER SUMNER & CANNON, INC.  
Clearwater Consultants, Inc.  
Environmental Engineers  
2047 West Main Street, Suite 1, Clarksdale, Mississippi 38011  
316 University Drive  
Post Office Box 1328  
Shreveville, Mississippi 39760  
Telephone (662) 323-8000  
Fax (662) 323-2200

**PART 77 AIRSPACE DRAWING**  
**AIRPORT LAYOUT PLAN**  
**McCHAREN FIELD AIRPORT**  
WEST POINT, MISSISSIPPI

REV.	DR.	JEC	CHK.	DATE	DESCRIPTION
1			DKS	12-29-2016	AIRPORT LAYOUT PLAN

6/5/2017  
3:42:12 PM  
\$ INSTR\$  
\$ USER\$  
\$ TBL\$





AERIAL MAPPING AND PHOTOGRAPHY PROVIDED BY:  
 SOUTHERN RESOURCES MAPPING, INC.  
 SURVEY DATE: AUGUST 24, 2016



- NOTES:
1. ALL VIOLATIONS DEPICTED ARE TRANSITIONAL SURFACE VIOLATIONS.
  2. CURRENTLY, THERE ARE NO LOCAL ZONING RESTRICTIONS IN PLACE TO PROTECT THE AIRPORT AND ITS SURROUNDING AIRSPACE.
  3. OBJECT ELEVATIONS ARE ABOVE MEAN SEA LEVEL (MSL).
  4. VIOLATIONS THAT ARE DEPICTED ON THE INNER APPROACH DRAWINGS ARE NOTED WITH AN \*.

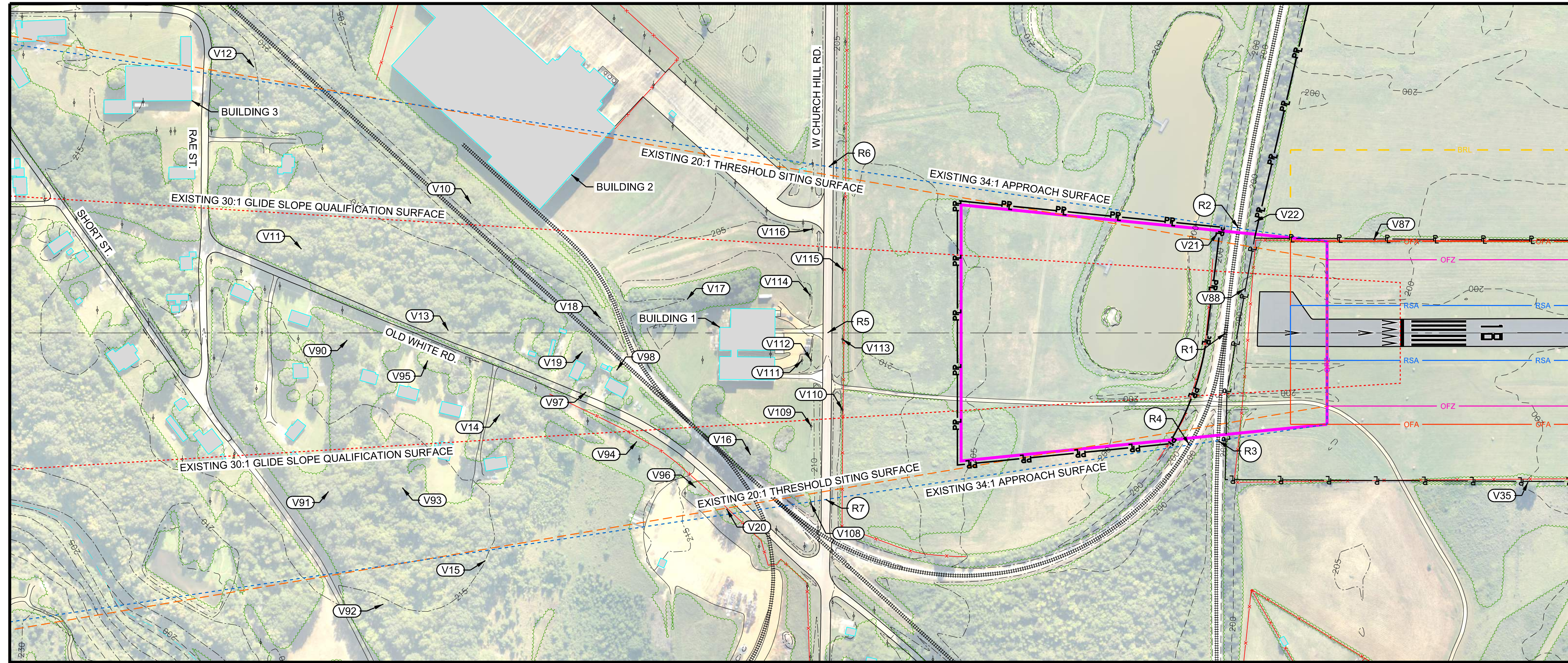
**VIOLATIONS TO FAR PART 77 SURFACES**

VIOLATION NUMBER	DESCRIPTION	OBJECT ELEVATION	SURFACE VIOLATION	EXISTING/PROPOSED DISPOSITION	VIOLATION NUMBER	DESCRIPTION	OBJECT ELEVATION	SURFACE VIOLATION	EXISTING/PROPOSED DISPOSITION	VIOLATION NUMBER	DESCRIPTION	OBJECT ELEVATION	SURFACE VIOLATION	EXISTING/PROPOSED DISPOSITION	VIOLATION NUMBER	DESCRIPTION	OBJECT ELEVATION	SURFACE VIOLATION	EXISTING/PROPOSED DISPOSITION
V1	BUILDING	217.7'	9.6'	LIGHT	V32	TREES	213.0'	13.3'	REMOVE	*V63	TREES	268.3'	45.2'	REMOVE	*V94	TREES	259.4'	0.3'	REMOVE
V2	BUILDING	213.2'	5.2'	LIGHT	V33	TREES	215.7'	15.4'	REMOVE	*V64	TREES	277.1'	44.5'	REMOVE	*V95	TREES	287.8'	12.0'	REMOVE
V3	BUILDING	212.2'	6.2'	LIGHT	V34	TREES	208.7'	7.7'	REMOVE	*V65	TREES	274.8'	11.1'	REMOVE	*V96	TREES	269.4'	15.1'	REMOVE
V4	BUILDING	225.1'	6.8'	LIGHT	V35	TREES	248.8'	23.8'	REMOVE	*V66	TREES	278.1'	37.3'	REMOVE	*V97	TREES	263.8'	0.7'	REMOVE
V5	BUILDING	215.9'	2.1'	LIGHT	V36	TREES	298.7'	60.3'	REMOVE	*V67	TREES	275.7'	35.6'	REMOVE	*V98	TREES	266.1'	5.4'	REMOVE
V6	BUILDING	222.7'	5.5'	LIGHT	V37	TREES	272.6'	2.2'	REMOVE	*V68	TREES	286.8'	45.3'	REMOVE	V99	TREES	212.0'	11.6'	REMOVE
V7	BUILDING	212.3'	3.5'	LIGHT	V38	TREES	272.4'	1.8'	REMOVE	*V69	TREES	296.0'	8.9'	REMOVE	V100	TREES	206.8'	6.5'	REMOVE
V8	BUILDING	212.4'	5.3'	LIGHT	*V39	TREES	277.5'	45.4'	REMOVE	*V70	TREES	286.9'	8.5'	REMOVE	V101	TREES	282.7'	7.8'	REMOVE
V9	BUILDING	213.0'	3.8'	LIGHT	V40	TREES	233.6'	13.4'	REMOVE	*V71	TREES	285.5'	20.1'	REMOVE	V102	TREES	269.8'	3.4'	REMOVE
*V10	TREES	299.7'	27.3'	REMOVE	V41	TREES	286.7'	46.5'	REMOVE	*V72	TREES	274.2'	8.2'	REMOVE	V103	TREES	211.3'	5.0'	REMOVE
*V11	TREES	296.8'	10.8'	REMOVE	V42	TREES	283.8'	52.6'	REMOVE	*V73	TREES	301.3'	40.5'	REMOVE	V104	TREES	265.2'	52.2'	REMOVE
*V12	TREES	295.8'	0.8'	REMOVE	V43	TREES	273.0'	24.6'	REMOVE	*V74	TREES	291.4'	26.6'	REMOVE	V105	TREES	266.1'	57.6'	REMOVE
*V13	TREES	281.3'	7.1'	REMOVE	V44	TREES	261.4'	43.2'	REMOVE	*V75	TREES	300.8'	4.4'	REMOVE	*V106	TREES	241.0'	20.0'	REMOVE
*V14	TREES	292.4'	22.4'	REMOVE	V45	TREES	280.9'	77.4'	REMOVE	*V76	TREES	291.2'	4.4'	REMOVE	*V107	TREES	232.8'	0.6'	REMOVE
*V15	TREES	302.6'	27.5'	REMOVE	V46	TREES	291.6'	51.6'	REMOVE	*V77	TREES	289.4'	0.5'	REMOVE	*V108	UTILITY POLE	251.3'	5.7'	LIGHT
*V16	TREES	279.4'	29.5'	REMOVE	V47	TREES	297.4'	2.5'	REMOVE	*V78	TREES	274.9'	19.3'	REMOVE	*V109	UTILITY POLE	250.7'	5.7'	LIGHT
*V17	TREES	277.9'	22.9'	REMOVE	V48	TREES	211.9'	6.1'	REMOVE	*V79	TREES	278.7'	29.7'	REMOVE	*V110	UTILITY POLE	250.4'	7.9'	LIGHT
*V18	TREES	266.8'	4.8'	REMOVE	V49	TREES	211.2'	5.5'	REMOVE	V80	TREES	288.2'	26.2'	REMOVE	*V111	UTILITY POLE	245.9'	0.1'	LIGHT
*V19	TREES	270.7'	7.3'	REMOVE	V50	TREES	264.9'	47.1'	REMOVE	V81	TREES	287.5'	62.0'	REMOVE	*V112	UTILITY POLE	250.9'	5.8'	LIGHT
*V20	TREES	260.0'	8.2'	REMOVE	V51	TREES	283.4'	48.7'	REMOVE	V82	TREES	265.2'	63.0'	REMOVE	*V113	UTILITY POLE	245.3'	2.8'	LIGHT
*V21	TREES	234.8'	22.4'	REMOVE	V52	TREES	296.8'	39.3'	REMOVE	V83	TREES	271.3'	4.2'	REMOVE	*V114	UTILITY POLE	249.3'	4.1'	LIGHT
*V22	TREES	242.9'	30.1'	REMOVE	V53	TREES	310.9'	75.1'	REMOVE	V84	TREES	277.3'	10.8'	REMOVE	*V115	UTILITY POLE	243.0'	0.4'	LIGHT
V23	TREES	298.2'	38.9'	REMOVE	V54	TREES	276.5'	70.9'	REMOVE	V85	TREES	278.1'	39.4'	REMOVE	*V116	UTILITY POLE	255.8'	10.9'	LIGHT
V24	TREES	296.7'	63.1'	REMOVE	V55	TREES	211.1'	4.8'	REMOVE	V86	TREES	217.7'	5.3'	REMOVE	V117	UTILITY POLE	241.0'	4.6'	LIGHT
V25	TREES	305.4'	54.8'	REMOVE	V56	TREES	299.9'	22.3'	REMOVE	V87	TREES	207.7'	3.6'	REMOVE	V118	UTILITY POLE	233.6'	8.1'	LIGHT
V26	TREES	308.8'	38.5'	REMOVE	V57	TREES	290.0'	10.7'	REMOVE	*V88	TREES	215.4'	5.2'	REMOVE	V119	UTILITY POLE	234.1'	2.8'	LIGHT
V27	TREES	294.2'	1.8'	REMOVE	V58	TREES	270.3'	3.6'	REMOVE	V89	TREES	204.0'	1.6'	REMOVE	V120	UTILITY POLE	236.2'	34.3'	LIGHT
V28	TREES	282.4'	60.0'	REMOVE	V59	TREES	279.4'	63.5'	REMOVE	*V90	TREES	292.0'	9.7'	REMOVE	V121	UTILITY POLE	234.6'	24.1'	LIGHT
V29	TREES	294.0'	28.0'	REMOVE	*V60	TREES	282.4'	11.6'	REMOVE	*V91	TREES	298.7'	14.9'	REMOVE	V122	UTILITY POLE	233.4'	21.7'	LIGHT
V30	TREES	286.7'	5.4'	REMOVE	*V61	TREES	276.6'	44.4'	REMOVE	*V92	TREES	300.0'	5.6'	REMOVE	V123	UTILITY POLE	224.7'	12.9'	LIGHT
V31	TREES	292.1'	66.1'	REMOVE	*V62	TREES	285.5'	53.0'	REMOVE	*V93	TREES	301.5'	23.6'	REMOVE	V124	UTILITY POLE	228.7'	16.7'	LIGHT

**PART 77 AIRSPACE DETAIL**  
**AIRPORT LAYOUT PLAN**  
**McCHAREN FIELD AIRPORT**  
 WEST POINT, MISSISSIPPI

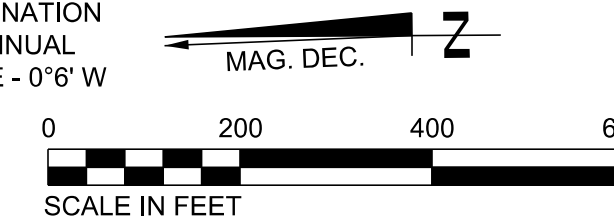
REV.	DR.	CHK.	DATE	DESCRIPTION
	JEC	DKS	12-29-2016	AIRPORT LAYOUT PLAN





AERIAL MAPPING AND PHOTOGRAPHY PROVIDED BY:  
SOUTHERN RESOURCES MAPPING, INC.  
SURVEY DATE: AUGUST 24, 2016

MAGNETIC DECLINATION  
2°2' W - 2016 ANNUAL  
RATE OF CHANGE - 0'6" W



LEGEND		
	EXISTING	ULTIMATE
RUNWAY SAFETY AREA (RSA)		
RUNWAY OBJECT FREE AREA (OFA)		
RUNWAY OBSTACLE FREE ZONE (OFZ)		
RUNWAY PROTECTION ZONE (RPZ)		
BUILDING RESTRICTION LINE (BRL)		
APPROACH SURFACE		
THRESHOLD SITING SURFACE		
GLIDE SLOPE QUALIFICATION SURFACE		
DEPARTURE SURFACE		
AIRPORT REFERENCE POINT		
AIRPORT PAVEMENT		
AIRPORT BUILDINGS		
OTHER BUILDINGS		N/A
AIRPORT PROPERTY LINE / EASEMENTS		
FENCE		
ROADS		
GROUND ELEVATION CONTOURS		N/A
ROTATING BEACON		N/A
PAPI		
THRESHOLD LIGHTS		
REIL		
UTILITY POLE		
TO BE REMOVED		

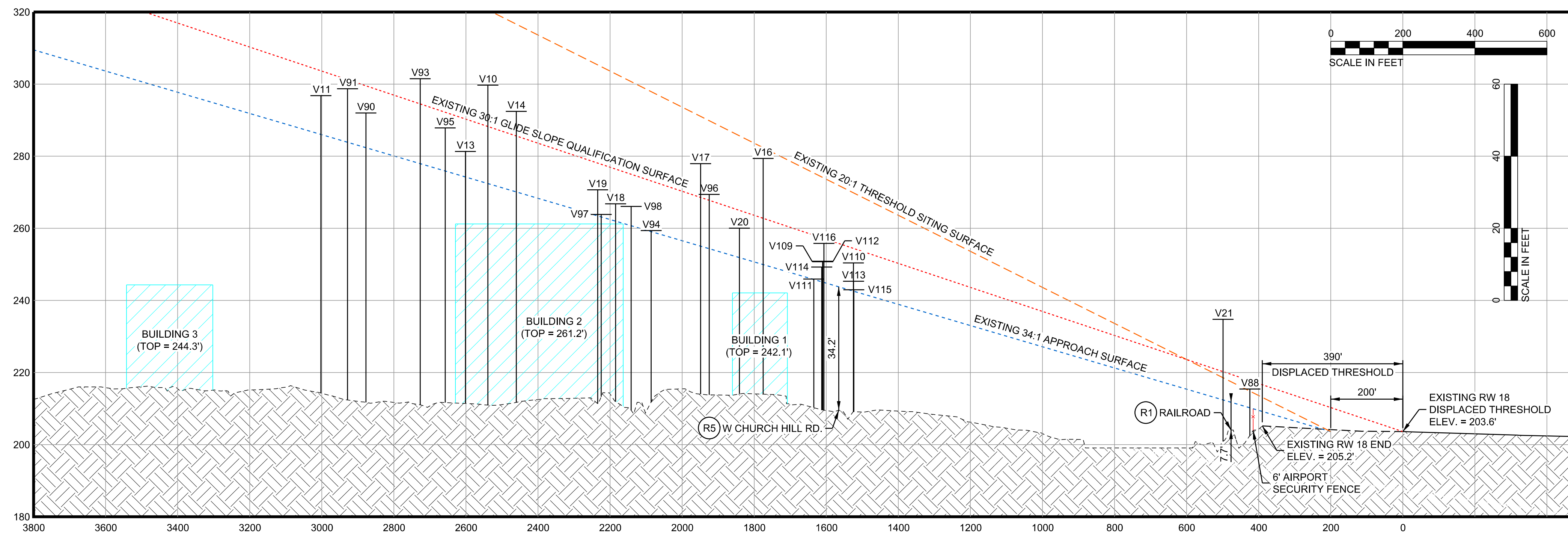
VERTICAL ROAD CLEARANCE CHART							
POINT	DESCRIPTION	APPROX. ROAD ELEV. (msl)	EXISTING PART 77 APPROACH SURFACES		ULTIMATE PART 77 APPROACH SURFACES		PROPOSED ACTION
			ELEV. (msl)	APPROX. CLEARANCE	ELEV. (msl)	APPROX. CLEARANCE	
R1	RAILROAD	204.1'	A 211.7'	7.6'	SAME	SAME	NONE
R2	RAILROAD	204.4'	A 210.7'	6.3'	SAME	SAME	NONE
R3	RAILROAD	203.4'	A 212.4'	9.0'	SAME	SAME	NONE
R4	RAILROAD	204.3'	A 214.7'	10.4'	SAME	SAME	NONE
R5	W CHURCH HILL RD.	209.5'	A 243.8'	34.3'	SAME	SAME	NONE
R6	W CHURCH HILL RD.	206.9'	A 243.6'	36.7'	SAME	SAME	NONE
R7	W CHURCH HILL RD.	210.9'	A 243.9'	33.0'	SAME	SAME	NONE

A=APPROACH T=TRANSITIONAL P=PRIMARY H=HORIZONTAL

FAR PART 77 REQUIRES THE FOLLOWING CLEARANCES:  
10 FEET ABOVE PRIVATE ROADS  
15 FEET ABOVE PUBLIC ROADS  
17 FEET ABOVE INTERSTATE HIGHWAYS  
23 FEET ABOVE RAILROADS  
ELEVATION = ACTUAL RAILROAD/ROADWAY ELEVATION AND FAR PART 77 CLEARANCE

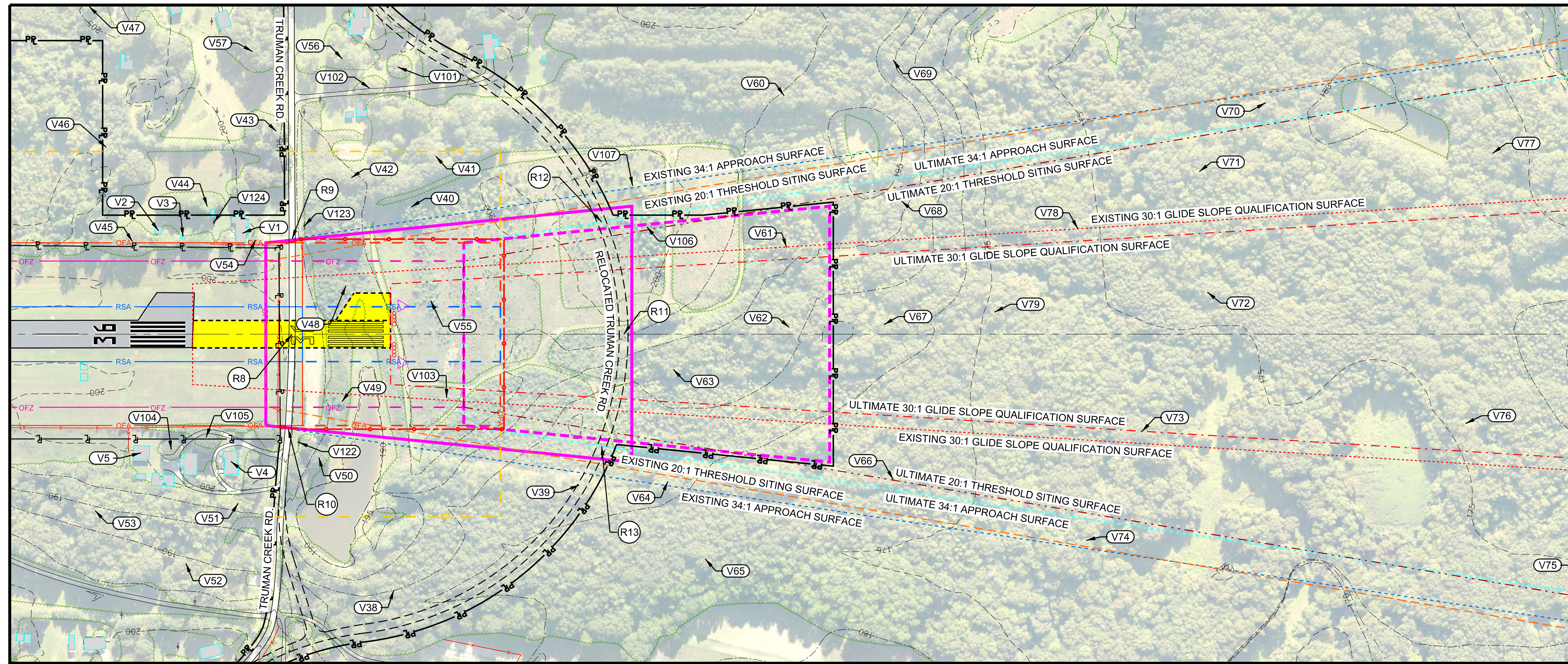
OBSTRUCTION TABLE (RW 18 APPROACH)							
POINT	DESCRIPTION	APPROX. TOP ELEV. (msl)	EXISTING PART 77 APPROACH SURFACES		ULTIMATE PART 77 APPROACH SURFACES		PROPOSED ACTION
			ELEV. (msl)	APPROX. PENETRATION	ELEV. (msl)	APPROX. PENETRATION	
V10	TREES	299.7'	A 272.4'	27.3'	SAME	SAME	REMOVE
V11	TREES	296.8'	A 286.0'	10.8'	SAME	SAME	REMOVE
V12	TREES	295.8'	A/T 295.0'	0.8'	SAME	SAME	REMOVE
V13	TREES	281.3'	A 274.2'	7.1'	SAME	SAME	REMOVE
V14	TREES	292.4'	A 270.0'	22.4'	SAME	SAME	REMOVE
V15	TREES	302.6'	A/T 275.1'	27.5'	SAME	SAME	REMOVE
V16	TREES	279.4'	A 249.9'	29.5'	SAME	SAME	REMOVE
V17	TREES	277.9'	A 255.0'	22.9'	SAME	SAME	REMOVE
V18	TREES	266.8'	A 262.0'	4.8'	SAME	SAME	REMOVE
V19	TREES	270.7'	A 263.4'	7.3'	SAME	SAME	REMOVE
V20	TREES	260.0'	A 251.8'	8.2'	SAME	SAME	REMOVE
V21	TREES	234.8'	A 212.4'	22.4'	SAME	SAME	REMOVE
V22	TREES	242.9'	A/T 212.8'	30.1'	SAME	SAME	REMOVE
V35	TREES	248.8'	T 225.0'	23.8'	SAME	SAME	REMOVE
V87	TREES	207.7'	T 204.1'	3.6'	SAME	SAME	REMOVE
V88	TREES	215.4'	A 210.2'	5.2'	SAME	SAME	REMOVE
V90	TREES	292.0'	A 282.3'	9.7'	SAME	SAME	REMOVE
V91	TREES	298.7'	A 283.8'	14.9'	SAME	SAME	REMOVE
V92	TREES	300.0'	A/T 294.4'	5.6'	SAME	SAME	REMOVE
V93	TREES	301.5'	A 277.9'	23.6'	SAME	SAME	REMOVE
V94	TREES	259.4'	A 259.1'	0.3'	SAME	SAME	REMOVE
V95	TREES	287.8'	A 275.8'	12.0'	SAME	SAME	REMOVE
V96	TREES	269.4'	A 254.3'	15.1'	SAME	SAME	REMOVE
V97	TREES	263.8'	A 263.1'	0.7'	SAME	SAME	REMOVE
V98	TREES	266.1'	A 260.7'	5.4'	SAME	SAME	REMOVE
V108	UTILITY POLE	251.3'	A/T 245.6'	5.7'	SAME	SAME	LIGHT
V109	UTILITY POLE	250.7'	A 245.0'	5.7'	SAME	SAME	LIGHT
V110	UTILITY POLE	250.4'	A 242.5'	7.9'	SAME	SAME	LIGHT
V111	UTILITY POLE	245.9'	A 245.8'	0.1'	SAME	SAME	LIGHT
V112	UTILITY POLE	250.9'	A 245.1'	5.8'	SAME	SAME	LIGHT
V113	UTILITY POLE	245.3'	A 242.5'	2.8'	SAME	SAME	LIGHT
V114	UTILITY POLE	249.3'	A 245.2'	4.1'	SAME	SAME	LIGHT
V115	UTILITY POLE	243.0'	A 242.6'	0.4'	SAME	SAME	LIGHT
V116	UTILITY POLE	255.8'	A 244.9'	10.9'	SAME	SAME	LIGHT

A=APPROACH T=TRANSITIONAL P=PRIMARY H=HORIZONTAL A/T=APPROACH TRANSITIONAL



REV.	DR.	CHK.	DATE	DESCRIPTION
	JEC	DKS	12-9-2016	AIRPORT LAYOUT PLAN





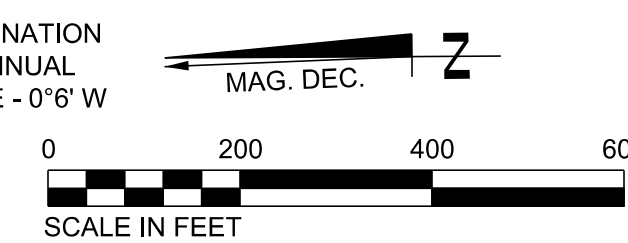
LEGEND		
	EXISTING	ULTIMATE
RUNWAY SAFETY AREA (RSA)	— RSA —	— RSA —
RUNWAY OBJECT FREE AREA (OFA)	— OFA —	— OFA —
RUNWAY OBSTACLE FREE ZONE (OFZ)	— OFZ —	— OFZ —
RUNWAY PROTECTION ZONE (RPZ)	— RPZ —	— RPZ —
BUILDING RESTRICTION LINE (BRL)	— BRL —	— BRL —
APPROACH SURFACE	— AS —	— AS —
THRESHOLD SITING SURFACE	— TS —	— TS —
GLIDE SLOPE QUALIFICATION SURFACE	— GS —	— GS —
DEPARTURE SURFACE	— DS —	— DS —
AIRPORT REFERENCE POINT	⊙	⊙
AIRPORT PAVEMENT	▬▬▬▬▬▬	▬▬▬▬▬▬
AIRPORT BUILDINGS	■	■
OTHER BUILDINGS	■	N/A
AIRPORT PROPERTY LINE / EASEMENTS	— PL —	— PL —
FENCE	— F —	— F —
ROADS	— R —	— R —
GROUND ELEVATION CONTOURS	— GC —	N/A
ROTATING BEACON	★	N/A
PAPI	□□□□	□□□□
THRESHOLD LIGHTS	●●●●	●●●●
REIL	— REIL —	— REIL —
UTILITY POLE	— UP —	— UP —
TO BE REMOVED	▨	▨

POINT	DESCRIPTION	APPROX. ROAD ELEV. (msl)	EXISTING PART 77 APPROACH SURFACES		ULTIMATE PART 77 APPROACH SURFACES		PROPOSED ACTION
			ELEV. (msl)	APPROX. CLEARANCE	ELEV. (msl)	APPROX. CLEARANCE	
R8	TRUMAN CREEK RD.	199.9'	A 205.9'	6.0'	N/A	N/A	RELOCATE
R9	TRUMAN CREEK RD.	196.9'	A 205.9'	9.0'	N/A	N/A	RELOCATE
R10	TRUMAN CREEK RD.	200.8'	A 205.6'	4.8'	N/A	N/A	RELOCATE
R11	RELOCATED TRUMAN CREEK RD.	196.1'	N/A	N/A	A 219.2'	23.1'	NONE
R12	RELOCATED TRUMAN CREEK RD.	202.3'	N/A	N/A	A 217.4'	15.1'	NONE
R13	RELOCATED TRUMAN CREEK RD.	182.7'	N/A	N/A	A 217.4'	34.7'	NONE

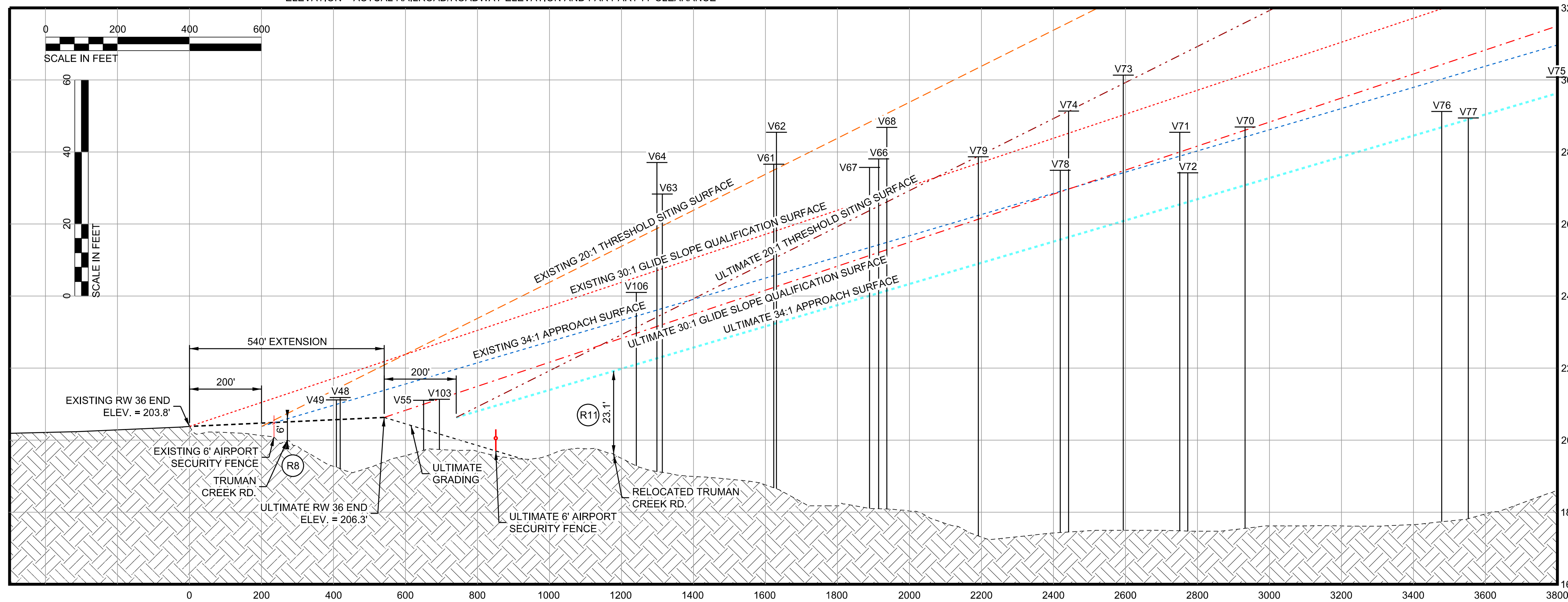
A=APPROACH T=TRANSITIONAL P=PRIMARY H=HORIZONTAL  
 FAR PART 77 REQUIRES THE FOLLOWING CLEARANCES:  
 10 FEET ABOVE PRIVATE ROADS  
 15 FEET ABOVE PUBLIC ROADS  
 17 FEET ABOVE INTERSTATE HIGHWAYS  
 23 FEET ABOVE RAILROADS  
 ELEVATION = ACTUAL RAILROAD/ROADWAY ELEVATION AND FAR PART 77 CLEARANCE

AERIAL MAPPING AND PHOTOGRAPHY PROVIDED BY:  
 SOUTHERN RESOURCES MAPPING, INC.  
 SURVEY DATE: AUGUST 24, 2016

MAGNETIC DECLINATION  
 2°2' W - 2016 ANNUAL  
 RATE OF CHANGE -0'6" W



NOTE: RELOCATED TRUMAN CREEK RD. WILL REQUIRE COORDINATION WITH THE NATIONAL AIRPORT PLANNING AND ENVIRONMENTAL DIVISION (APC-400)



POINT	DESCRIPTION	APPROX. TOP ELEV. (msl)	EXISTING PART 77 APPROACH SURFACES		ULTIMATE PART 77 APPROACH SURFACES		PROPOSED ACTION
			ELEV. (msl)	APPROX. PENETRATION	ELEV. (msl)	APPROX. PENETRATION	
V1	BUILDING	217.7'	T 207.5'	10.2'	T 208.1'	9.6'	REMOVE
V2	BUILDING	213.2'	T 208.0'	5.2'	T 208.0'	5.2'	REMOVE
V3	BUILDING	212.2'	T 206.0'	6.2'	T 206.0'	6.2'	REMOVE
V4	BUILDING	225.1'	T 217.8'	7.3'	T 218.3'	6.8'	REMOVE
V5	BUILDING	215.9'	T 213.8'	2.1'	T 213.8'	2.1'	REMOVE
V38	TREES	272.4'	A/T 270.9'	1.5'	T 270.6'	1.8'	REMOVE
V39	TREES	277.5'	A/T 233.9'	43.6'	A/T 232.1'	45.4'	REMOVE
V40	TREES	233.6'	A/T 220.9'	12.7'	T 220.2'	13.4'	REMOVE
V41	TREES	286.7'	A/T 241.4'	45.3'	T 240.2'	46.5'	REMOVE
V42	TREES	283.8'	A/T 231.1'	52.7'	T 231.2'	52.6'	REMOVE
V43	TREES	273.0'	T 247.6'	25.4'	T 248.4'	24.6'	REMOVE
V44	TREES	261.4'	T 218.0'	43.4'	T 218.2'	43.2'	REMOVE
V45	TREES	280.9'	T 203.5'	77.4'	T 203.5'	77.4'	REMOVE
V46	TREES	291.6'	T 240.0'	51.6'	T 240.0'	51.6'	REMOVE
V47	TREES	297.4'	T 294.9'	2.5'	T 294.9'	2.5'	REMOVE
V48	TREES	211.9'	A 210.3'	1.6'	A 205.8'	6.1'	REMOVE
V49	TREES	211.2'	A 209.9'	1.3'	A 205.7'	5.5'	REMOVE
V50	TREES	264.9'	A/T 217.4'	47.5'	T 217.8'	47.1'	REMOVE
V51	TREES	283.4'	T 234.2'	49.2'	T 234.7'	48.7'	REMOVE
V52	TREES	296.8'	T 257.5'	39.3'	T 257.5'	39.3'	REMOVE
V53	TREES	310.9'	T 235.8'	75.1'	T 235.8'	75.1'	REMOVE
V54	TREES	276.5'	T 204.8'	71.7'	T 205.6'	70.9'	REMOVE
V55	TREES	211.1'	A 217.1'	N/A	A 206.3'	4.8'	REMOVE
V56	TREES	299.9'	A/T 277.3'	22.6'	T 277.6'	22.3'	REMOVE
V57	TREES	290.0'	T 278.5'	11.5'	T 279.3'	10.7'	REMOVE
V60	TREES	282.4'	A/T 272.6'	9.8'	A/T 270.8'	11.6'	REMOVE
V61	TREES	276.6'	A 245.6'	31.0'	A 232.2'	44.4'	REMOVE
V62	TREES	285.5'	A 245.9'	39.6'	A 232.5'	53.0'	REMOVE
V63	TREES	268.3'	A 236.5'	31.8'	A 223.1'	45.2'	REMOVE
V64	TREES	277.1'	A 236.1'	41.0'	A/T 232.6'	44.5'	REMOVE
V65	TREES	274.8'	A/T 265.5'	9.3'	A/T 263.7'	11.1'	REMOVE
V66	TREES	278.1'	A 254.2'	23.9'	A 240.8'	37.3'	REMOVE
V67	TREES	275.7'	A 253.5'	22.2'	A 240.1'	35.6'	REMOVE
V68	TREES	286.8'	A 254.9'	31.9'	A 241.5'	45.3'	REMOVE
V69	TREES	296.0'	A/T 288.9'	7.1'	A/T 287.1'	8.9'	REMOVE
V70	TREES	286.9'	A 284.1'	2.8'	A/T 278.4'	8.5'	REMOVE
V71	TREES	285.5'	A 278.8'	6.7'	A 265.4'	20.1'	REMOVE
V72	TREES	274.2'	A 279.4'	N/A	A 266.0'	8.2'	REMOVE
V73	TREES	301.3'	A 274.2'	27.1'	A 260.8'	40.5'	REMOVE
V74	TREES	291.4'	A 269.8'	21.6'	A/T 264.8'	26.6'	REMOVE
V75	TREES	300.8'	A 309.8'	N/A	A 296.4'	4.4'	REMOVE
V76	TREES	291.2'	A 300.2'	N/A	A 286.8'	4.4'	REMOVE
V77	TREES	289.4'	A 302.3'	N/A	A 288.9'	0.5'	REMOVE
V78	TREES	274.9'	A 269.0'	5.9'	A 255.6'	19.3'	REMOVE
V79	TREES	278.7'	A 262.4'	16.3'	A 249.0'	29.7'	REMOVE
V101	TREES	282.7'	A/T 275.3'	7.4'	T 274.9'	7.8'	REMOVE
V102	TREES	269.8'	A/T 266.4'	3.4'	T 266.4'	3.4'	REMOVE
V103	TREES	211.3'	A 218.3'	N/A	A 206.3'	5.0'	REMOVE
V104	TREES	265.2'	T 213.0'	52.2'	T 213.0'	52.2'	REMOVE
V105	TREES	266.1'	T 208.4'	57.7'	T 208.5'	57.6'	REMOVE
V106	TREES	241.0'	A 234.4'	6.6'	A 221.0'	20.0'	REMOVE
V107	TREES	232.8'	A/T 234.0'	N/A	A/T 232.2'	0.6'	REMOVE
V122	UTILITY POLE	233.4'	A/T 211.1'	22.3'	T 211.7'	21.7'	LIGHT
V123	UTILITY POLE	224.7'	A/T 211.2'	13.5'	T 211.8'	12.9'	LIGHT
V124	UTILITY POLE	228.7'	T 211.7'	17.0'	T 212.0'	16.7'	LIGHT

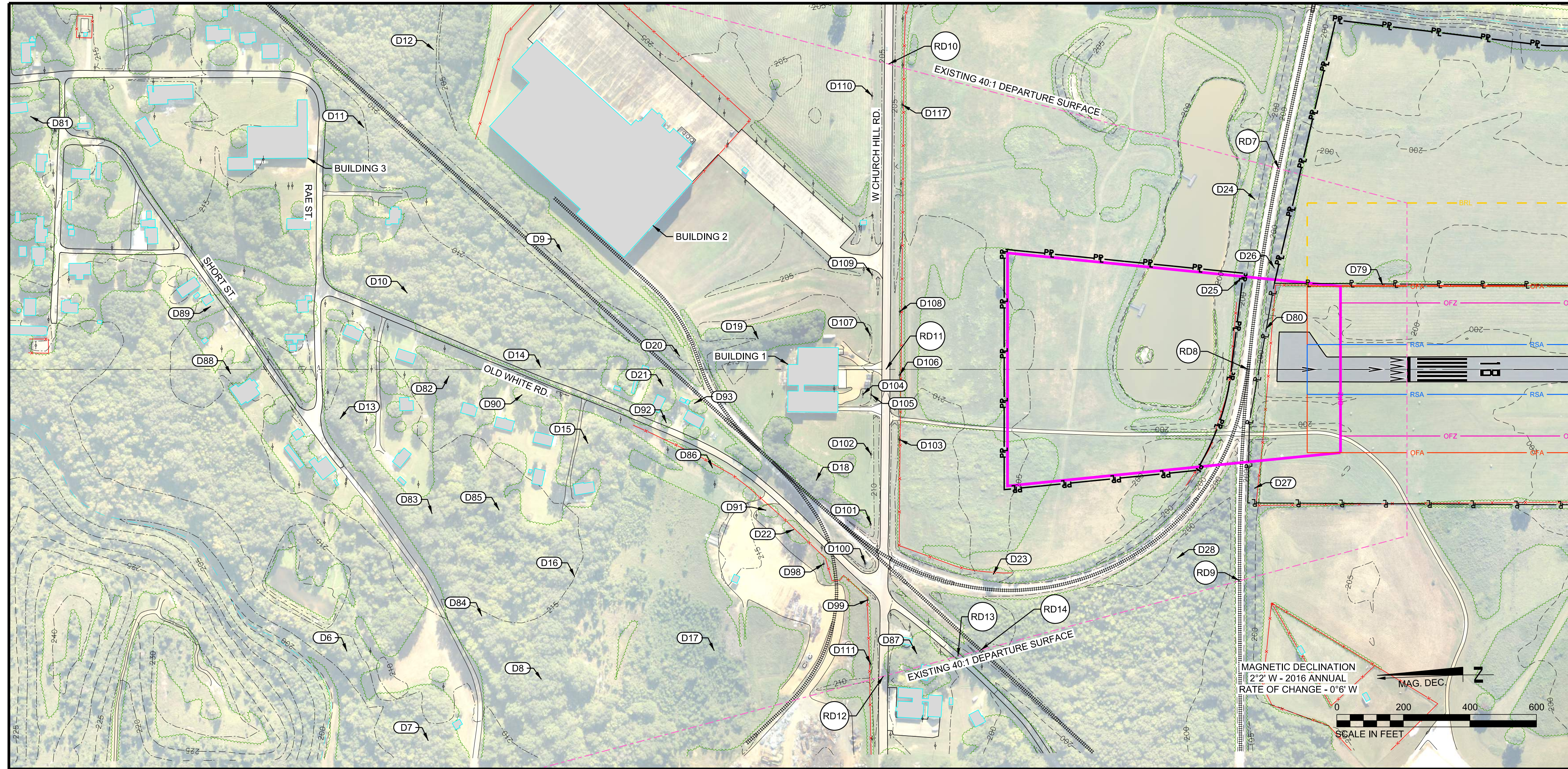
A=APPROACH T=TRANSITIONAL P=PRIMARY H=HORIZONTAL A/T=APPROACH TRANSITIONAL

REV.	CHK.	DATE	DESCRIPTION
1	DKS	12-2-2016	AIRPORT LAYOUT PLAN



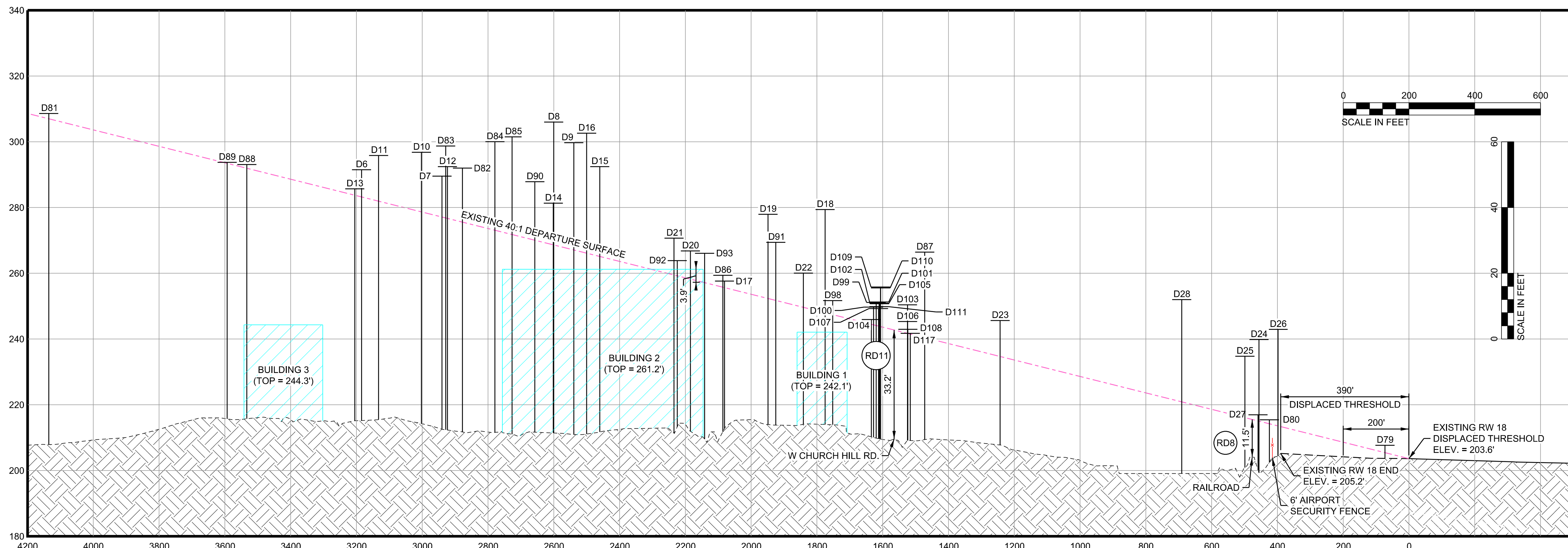






LEGEND		
	EXISTING	ULTIMATE
RUNWAY SAFETY AREA (RSA)	— RSA —	— RSA —
RUNWAY OBJECT FREE AREA (OFA)	— OFA —	— OFA —
RUNWAY OBSTACLE FREE ZONE (OFZ)	— OFZ —	— OFZ —
RUNWAY PROTECTION ZONE (RPZ)	— RPZ —	— RPZ —
BUILDING RESTRICTION LINE (BRL)	— BRL —	— BRL —
APPROACH SURFACE	— AS —	— AS —
THRESHOLD SITING SURFACE	— TSS —	— TSS —
GLIDE SLOPE QUALIFICATION SURFACE	— GSQS —	— GSQS —
DEPARTURE SURFACE	— DS —	— DS —
AIRPORT REFERENCE POINT	○	◇
AIRPORT PAVEMENT	▨	▨
AIRPORT BUILDINGS	■	■
OTHER BUILDINGS	■	N/A
AIRPORT PROPERTY LINE / EASEMENTS	— PL —	— PE —
FENCE	— F —	— F —
ROADS	— R —	— R —
GROUND ELEVATION CONTOURS	— GC —	N/A
ROTATING BEACON	★	N/A
PAPI	■ ■ ■ ■	□ □ □ □
THRESHOLD LIGHTS	● ● ● ●	○ ○ ○ ○
REIL	— R —	— R —
UTILITY POLE	○	N/A
TO BE REMOVED	▨	▨

AERIAL MAPPING AND PHOTOGRAPHY PROVIDED BY:  
SOUTHERN RESOURCES MAPPING, INC.  
SURVEY DATE: AUGUST 24, 2016



REVISION INFORMATION	
REV.	DESCRIPTION
DR.	DATE
CHK.	DATE
DEC.	DATE
DES.	DATE
APP.	DATE
REV.	DATE
CHK.	DATE
DEC.	DATE
DES.	DATE
APP.	DATE
REV.	DATE
CHK.	DATE
DEC.	DATE
DES.	DATE
APP.	DATE

9/17/2017  
8:57:50 AM  
\$INSTR\$  
\$USER\$  
\$TBL\$



RUNWAY 18 DEPARTURE SURFACE

OBSTRUCTION TABLE (RW 18 DEPARTURE)							
POINT	DESCRIPTION	APPROX. TOP ELEV. (msl)	EXISTING PART 77 DEPARTURE SURFACES		ULTIMATE PART 77 DEPARTURE SURFACES		PROPOSED ACTION
			ELEV. (msl)	APPROX. PENETRATION	ELEV. (msl)	APPROX. PENETRATION	
D1	BUILDING	211.5'	205.1'	6.4'	204.0'	7.5'	REMOVE
D2	BUILDING	217.7'	207.2'	10.5'	204.4'	13.3'	REMOVE
D3	BUILDING	225.1'	206.4'	18.7'	204.3'	20.8'	N/A
D29	TREES	266.2'	225.6'	40.6'	N/A	N/A	REMOVE
D30	TREES	269.8'	232.6'	37.2'	N/A	N/A	REMOVE
D31	TREES	277.5'	230.2'	47.3'	219.2'	58.3'	REMOVE
D32	TREES	233.6'	218.7'	14.9'	207.7'	25.9'	REMOVE
D33	TREES	286.7'	220.4'	66.3'	209.4'	77.3'	REMOVE
D34	TREES	283.8'	214.7'	69.1'	205.9'	77.9'	REMOVE
D35	TREES	273.0'	209.5'	63.5'	N/A	N/A	REMOVE
D36	TREES	261.4'	204.8'	56.6'	204.0'	57.4'	REMOVE
D39	TREES	264.9'	212.4'	52.5'	205.4'	59.5'	REMOVE
D40	TREES	283.4'	206.9'	76.5'	204.4'	79.0'	REMOVE
D41	TREES	276.5'	208.1'	68.4'	204.6'	71.9'	REMOVE
D42	TREES	211.1'	N/A	N/A	209.1'	2.0'	REMOVE
D43	TREES	271.4'	230.1'	41.3'	N/A	N/A	REMOVE
D44	TREES	290.1'	241.4'	48.7'	N/A	N/A	REMOVE
D45	TREES	282.4'	244.2'	38.2'	233.2'	49.2'	REMOVE
D46	TREES	276.6'	244.4'	32.2'	233.3'	43.3'	REMOVE
D47	TREES	285.5'	244.6'	40.9'	233.6'	51.9'	REMOVE
D48	TREES	268.3'	236.6'	31.7'	225.6'	42.7'	REMOVE
D49	TREES	277.1'	236.3'	40.8'	225.3'	51.8'	REMOVE
D50	TREES	274.8'	238.8'	36.0'	227.8'	47.0'	REMOVE
D51	TREES	255.0'	249.5'	5.5'	238.5'	16.5'	REMOVE
D52	TREES	278.1'	251.7'	26.4'	240.7'	37.4'	REMOVE
D53	TREES	275.7'	251.0'	24.7'	240.0'	35.7'	REMOVE
D54	TREES	286.8'	252.2'	34.6'	241.2'	45.6'	REMOVE
D55	TREES	296.0'	251.6'	44.4'	240.6'	55.4'	REMOVE
D56	TREES	298.7'	281.3'	17.4'	270.2'	28.5'	REMOVE
D57	TREES	286.9'	277.1'	9.8'	266.1'	20.8'	REMOVE
D58	TREES	285.5'	272.6'	12.9'	261.6'	23.9'	REMOVE
D59	TREES	274.2'	273.1'	1.1'	262.1'	12.1'	REMOVE
D60	TREES	301.3'	268.6'	32.7'	257.6'	43.7'	REMOVE
D61	TREES	291.4'	264.9'	26.5'	253.9'	37.5'	REMOVE
D62	TREES	280.4'	261.5'	18.9'	250.5'	29.9'	REMOVE
D63	TREES	289.5'	255.8'	33.7'	244.7'	44.8'	REMOVE
D64	TREES	288.2'	276.6'	11.6'	N/A	N/A	REMOVE
D65	TREES	297.9'	284.3'	13.6'	273.2'	24.7'	REMOVE
D66	TREES	301.0'	291.7'	9.3'	280.7'	20.3'	REMOVE
D67	TREES	300.8'	298.9'	1.9'	287.9'	12.9'	REMOVE
D68	TREES	288.2'	N/A	N/A	285.9'	2.3'	REMOVE
D69	TREES	291.2'	290.7'	0.5'	279.7'	11.5'	REMOVE
D70	TREES	281.0'	N/A	N/A	278.6'	2.4'	REMOVE
D71	TREES	289.4'	N/A	N/A	281.6'	7.8'	REMOVE
D72	TREES	287.6'	N/A	N/A	279.6'	8.0'	REMOVE
D73	TREES	297.2'	284.8'	12.4'	273.8'	23.4'	REMOVE
D74	TREES	300.5'	N/A	N/A	296.5'	4.0'	REMOVE
D75	TREES	293.2'	N/A	N/A	284.6'	8.6'	REMOVE
D76	TREES	274.9'	264.3'	10.6'	253.2'	21.7'	REMOVE
D77	TREES	278.7'	258.6'	20.1'	247.6'	31.1'	REMOVE
D78	TREES	282.8'	270.7'	12.1'	259.7'	23.1'	REMOVE
D94	TREES	211.3'	N/A	N/A	210.1'	1.2'	REMOVE
D95	TREES	266.1'	204.7'	61.4'	204.0'	62.1'	REMOVE
D96	TREES	241.0'	234.8'	6.2'	223.8'	17.2'	REMOVE
D97	TREES	232.8'	N/A	N/A	222.9'	9.9'	REMOVE
D112	UTILITY POLE	233.4'	211.1'	22.3'	205.2'	28.2'	LIGHT
D113	UTILITY POLE	224.7'	211.4'	13.3'	205.2'	19.5'	LIGHT
D114	UTILITY POLE	228.7'	205.3'	23.4'	204.1'	24.6'	LIGHT
D115	UTILITY POLE	244.7'	218.6'	26.1'	N/A	N/A	LIGHT
D116	UTILITY POLE	226.8'	225.1'	1.7'	N/A	N/A	LIGHT

VERTICAL ROAD CLEARANCE CHART (RW 18 DEPARTURE)							
POINT	DESCRIPTION	APPROX. ROAD ELEV. (msl)	EXISTING DEPARTURE SURFACES		ULTIMATE DEPARTURE SURFACES		PROPOSED ACTION
			ELEV. (msl)	APPROX. CLEARANCE	ELEV. (msl)	APPROX. CLEARANCE	
RD1	TRUMAN CREEK RD.	196.9'	210.6'	13.7'	N/A	N/A	RELOCATE
RD2	TRUMAN CREEK RD.	200.0'	210.6'	10.6'	N/A	N/A	RELOCATE
RD3	TRUMAN CREEK RD.	192.2'	209.7'	17.5'	N/A	N/A	RELOCATE
RD4	RELOCATED TRUMAN CREEK RD.	198.2'	N/A	N/A	215.6'	17.4'	NONE
RD5	RELOCATED TRUMAN CREEK RD.	196.1'	N/A	N/A	222.3'	26.2'	NONE
RD6	RELOCATED TRUMAN CREEK RD.	179.4'	N/A	N/A	215.6'	36.2'	NONE

RUNWAY 36 DEPARTURE SURFACE

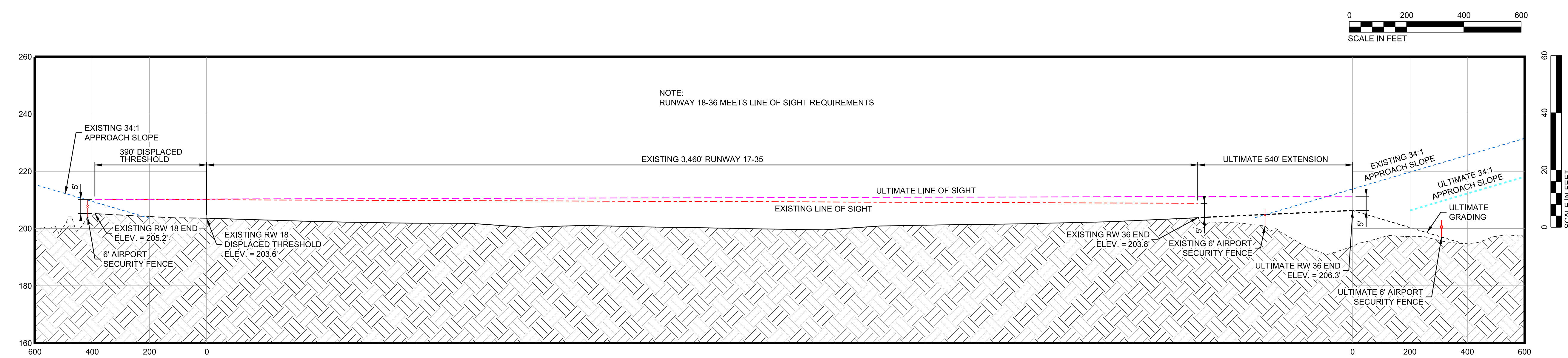
OBSTRUCTION TABLE (RW 36 DEPARTURE)							
POINT	DESCRIPTION	APPROX. TOP ELEV. (msl)	EXISTING PART 77 DEPARTURE SURFACES		ULTIMATE PART 77 DEPARTURE SURFACES		PROPOSED ACTION
			ELEV. (msl)	APPROX. PENETRATION	ELEV. (msl)	APPROX. PENETRATION	
D6	TREES	291.5'	283.2'	8.3'	SAME	SAME	REMOVE
D7	TREES	289.5'	277.1'	12.4'	SAME	SAME	REMOVE
D8	TREES	306.0'	268.6'	37.4'	SAME	SAME	REMOVE
D9	TREES	299.7'	267.1'	32.6'	SAME	SAME	REMOVE
D10	TREES	296.8'	278.7'	18.1'	SAME	SAME	REMOVE
D11	TREES	295.8'	281.9'	13.9'	SAME	SAME	REMOVE
D12	TREES	292.4'	276.6'	15.8'	SAME	SAME	REMOVE
D13	TREES	285.7'	283.8'	1.9'	SAME	SAME	REMOVE
D14	TREES	281.3'	268.6'	12.7'	SAME	SAME	REMOVE
D15	TREES	292.4'	265.1'	27.3'	SAME	SAME	REMOVE
D16	TREES	302.6'	266.1'	36.5'	SAME	SAME	REMOVE
D17	TREES	257.6'	255.6'	2.0'	SAME	SAME	REMOVE
D18	TREES	279.4'	248.0'	31.4'	SAME	SAME	REMOVE
D19	TREES	277.9'	252.3'	25.6'	SAME	SAME	REMOVE
D20	TREES	266.8'	258.2'	8.6'	SAME	SAME	REMOVE
D21	TREES	270.7'	259.5'	11.2'	SAME	SAME	REMOVE
D22	TREES	260.0'	249.6'	10.4'	SAME	SAME	REMOVE
D23	TREES	245.6'	234.6'	11.0'	SAME	SAME	REMOVE
D24	TREES	239.8'	215.0'	24.8'	SAME	SAME	REMOVE
D25	TREES	234.8'	216.1'	18.7'	SAME	SAME	REMOVE
D26	TREES	242.9'	213.5'	29.4'	SAME	SAME	REMOVE
D27	TREES	217.0'	215.1'	1.9'	SAME	SAME	REMOVE
D28	TREES	252.0'	220.9'	31.1'	SAME	SAME	REMOVE
D79	TREES	207.7'	205.4'	2.3'	SAME	SAME	REMOVE
D80	TREES	215.4'	214.2'	1.2'	SAME	SAME	REMOVE
D81	TREES	308.6'	307.0'	1.6'	SAME	SAME	REMOVE
D82	TREES	292.0'	275.6'	16.4'	SAME	SAME	REMOVE
D83	TREES	298.7'	276.8'	21.9'	SAME	SAME	REMOVE
D84	TREES	300.0'	273.1'	26.9'	SAME	SAME	REMOVE
D85	TREES	301.5'	271.8'	29.7'	SAME	SAME	REMOVE
D86	TREES	259.4'	255.8'	3.6'	SAME	SAME	REMOVE
D87	TREES	266.4'	240.4'	26.0'	SAME	SAME	REMOVE
D88	TREES	293.1'	292.0'	1.1'	SAME	SAME	REMOVE
D89	TREES	293.7'	293.4'	0.3'	SAME	SAME	REMOVE
D90	TREES	287.8'	270.0'	17.8'	SAME	SAME	REMOVE
D91	TREES	269.4'	251.7'	17.7'	SAME	SAME	REMOVE
D92	TREES	263.8'	259.2'	4.6'	SAME	SAME	REMOVE
D93	TREES	266.1'	257.2'	8.9'	SAME	SAME	REMOVE
D98	UTILITY POLE	251.7'	247.4'	4.3'	SAME	SAME	LIGHT
D99	UTILITY POLE	251.1'	244.1'	7.0'	SAME	SAME	LIGHT
D100	UTILITY POLE	249.7'	244.3'	5.4'	SAME	SAME	LIGHT
D101	UTILITY POLE	251.3'	243.9'	7.4'	SAME	SAME	LIGHT
D102	UTILITY POLE	250.7'	243.8'	6.9'	SAME	SAME	LIGHT
D103	UTILITY POLE	250.4'	241.7'	8.7'	SAME	SAME	LIGHT
D104	UTILITY POLE	245.9'	244.4'	1.5'	SAME	SAME	LIGHT
D105	UTILITY POLE	250.9'	243.9'	7.0'	SAME	SAME	LIGHT
D106	UTILITY POLE	245.3'	241.7'	3.6'	SAME	SAME	LIGHT
D107	UTILITY POLE	249.3'	244.0'	5.3'	SAME	SAME	LIGHT
D108	UTILITY POLE	243.0'	241.7'	1.3'	SAME	SAME	LIGHT
D109	UTILITY POLE	255.8'	243.8'	12.0'	SAME	SAME	LIGHT
D110	UTILITY POLE	255.6'	243.8'	11.8'	SAME	SAME	LIGHT
D111	UTILITY POLE	249.8'	243.8'	6.0'	SAME	SAME	LIGHT
D117	UTILITY POLE	241.7'	241.5'	0.2'	SAME	SAME	LIGHT

VERTICAL ROAD CLEARANCE CHART (RW 36 DEPARTURE)							
POINT	DESCRIPTION	APPROX. ROAD ELEV. (msl)	EXISTING DEPARTURE SURFACES		ULTIMATE DEPARTURE SURFACES		PROPOSED ACTION
			ELEV. (msl)	APPROX. CLEARANCE	ELEV. (msl)	APPROX. CLEARANCE	
RD7	RAILROAD	204.5'	213.2'	8.7'	SAME	SAME	RELOCATE
RD8	RAILROAD	204.1'	215.6'	11.5'	SAME	SAME	RELOCATE
RD9	RAILROAD	202.8'	216.2'	13.4'	SAME	SAME	RELOCATE
RD10	W. CHURCH HILL RD.	206.6'	242.5'	35.9'	SAME	SAME	NONE
RD11	W. CHURCH HILL RD.	209.5'	242.7'	33.2'	SAME	SAME	NONE
RD12	W. CHURCH HILL RD.	210.4'	242.9'	32.5'	SAME	SAME	NONE
RD13	OLD WHITE RD.	204.1'	237.3'	33.2'	SAME	SAME	NONE
RD14	RAILROAD	207.8'	235.6'	27.8'	SAME	SAME	NONE

REV.	CHK.	DATE	DESCRIPTION
	JEC	12-9-2016	AIRPORT LAYOUT PLAN



**RUNWAY 18-36 PROFILE**  
**AIRPORT LAYOUT PLAN**  
**McCHAREN FIELD AIRPORT**  
 WEST POINT, MISSISSIPPI



REVISION INFORMATION	
REV.	DESCRIPTION
CHK.	DATE
DKS	12-9-2016
AIRPORT LAYOUT PLAN	
DR.	
JEC	

6/5/2017  
 3:51:47 PM  
 \$INSTR\$  
 \$USER\$  
 \$TBL\$



U.S. HIGHWAY 45 ALT

- NOTES:
1. A BOUNDARY SURVEY HAS NOT BEEN COMPLETED FOR THIS EXHIBIT "A" PROPERTY MAP.
  2. THE PROPERTY LINES, BEARINGS AND DISTANCES SHOWN ARE A DEPICTION OF DEEDS, TAX MAPS AND GIS PARCEL DATA.
  3. THE ACREAGE LABELED IN THE PROPERTY TABLE FOR TRACTS 1-6 IS BASED ON EACH REPRESENTATIVE DEED.

AERIAL MAPPING AND PHOTOGRAPHY PROVIDED BY:  
SOUTHERN RESOURCES MAPPING, INC.  
SURVEY DATE: AUGUST 24, 2016

**BWSC**  
BARGE WAGGONER SUMNER & CANNON, INC.  
2647 West Main Street, Suite 1, Clarksdale, Mississippi 38701  
Phone: (662) 323-8000  
Fax: (662) 323-2200

Clearwater Consultants, Inc.  
Environmental Engineers  
516 University Drive  
Post Office Box 1328  
Shreveport, Louisiana 71201  
Telephone: (504) 835-9900  
Fax: (504) 835-9900

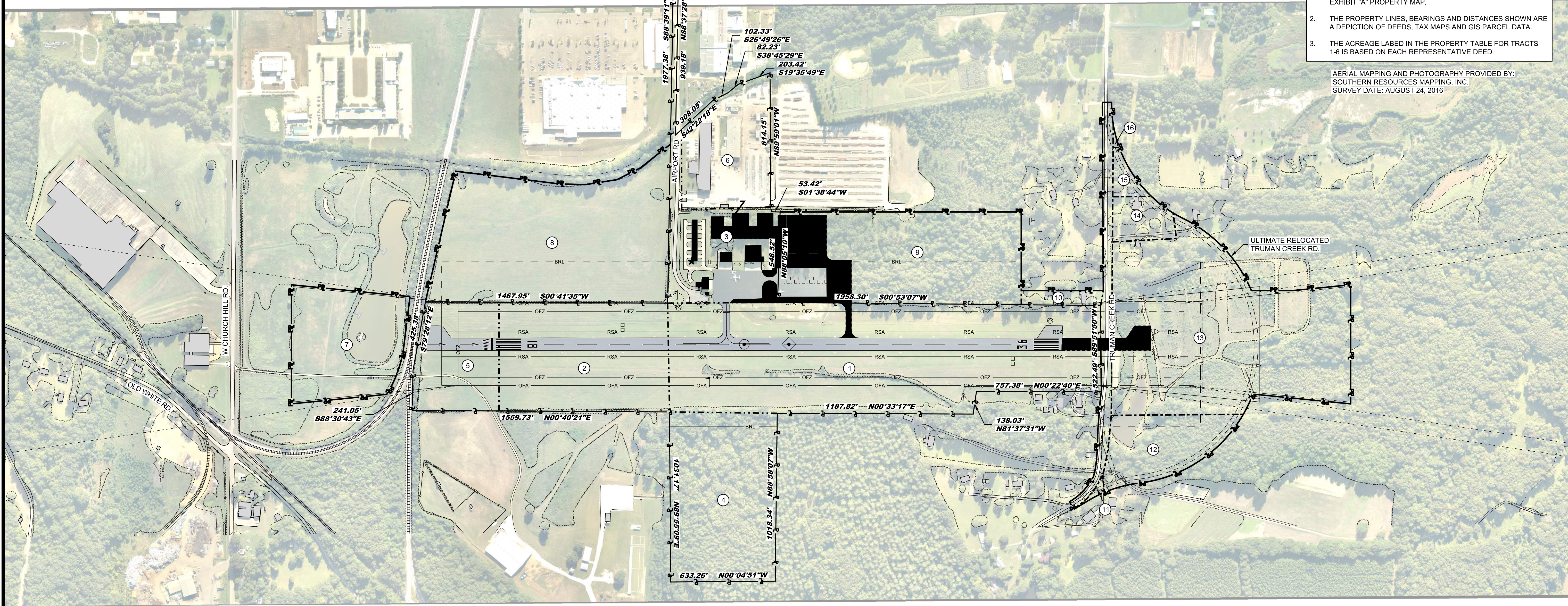
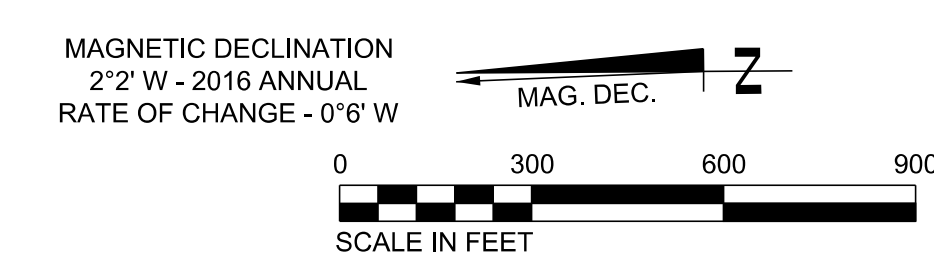


EXHIBIT "A" PROPERTY MAP  
AIRPORT LAYOUT PLAN  
McCHAREN FIELD AIRPORT  
WEST POINT, MISSISSIPPI

PROPERTY TABLE								
TRACT	GRANTOR	GRANTEE	±ACRES	DEED/PAGE	INTEREST	DATE RECORDED	FAA AIP NO.	PURPOSE OF ACQUISITION
1	DR. L.L. MCCHAREN	CITY OF WEST POINT AND CLAY COUNTY, MS	37.6	83/39	FEE SIMPLE	7-Jun-56	N/A	N/A
2	GRAHAM & CATHERINE CAMPBELL, SR.	CITY OF WEST POINT AND CLAY COUNTY, MS	15.2	83/194	FEE SIMPLE	18-Aug-56	N/A	N/A
3	ETHEL E. VAUGHN	CITY OF WEST POINT AND CLAY COUNTY, MS	23.0	83/107	FEE SIMPLE	20-Jun-56	N/A	N/A
4	JOE & AGGIE SEITZ	CITY OF WEST POINT AND CLAY COUNTY, MS	14.3	83/258	FEE SIMPLE	15-Sep-56	N/A	N/A
5	PRAIRIE LIVESTOCK, INC.	CITY OF WEST POINT AND CLAY COUNTY, MS	7.6	166/20	FEE SIMPLE	16-Aug-84	N/A	N/A
6	CITY OF WEST POINT, MS	FABRICATORS SUPPLY, LLC	8.5	265/49	LEASE	4-Jun-09	N/A	N/A
7	B. BRYAN FARMS, INC.	CITY OF WEST POINT AND CLAY COUNTY, MS	10.1	N/A	FEE SIMPLE	FUTURE	FUTURE	FUTURE DEVELOPMENT
8			24.5	N/A	FEE SIMPLE	FUTURE	FUTURE	FUTURE DEVELOPMENT
9			18.7	N/A	FEE SIMPLE	FUTURE	FUTURE	FUTURE DEVELOPMENT
10	THOMAS & LINDA LANE	CITY OF WEST POINT AND CLAY COUNTY, MS	1.0	N/A	FEE SIMPLE	FUTURE	FUTURE	FUTURE DEVELOPMENT
11	KENNY & DEBORAH INGRAM	CITY OF WEST POINT AND CLAY COUNTY, MS	0.1	N/A	FEE SIMPLE	FUTURE	FUTURE	FUTURE DEVELOPMENT
12	BOBBY & SHIRLEY MILLER	CITY OF WEST POINT AND CLAY COUNTY, MS	6.0	N/A	FEE SIMPLE	FUTURE	FUTURE	FUTURE DEVELOPMENT
13	THOMAS WALKER	CITY OF WEST POINT AND CLAY COUNTY, MS	29.6	N/A	FEE SIMPLE	FUTURE	FUTURE	FUTURE DEVELOPMENT
14	DONALD WALKER	CITY OF WEST POINT AND CLAY COUNTY, MS	2.1	N/A	FEE SIMPLE	FUTURE	FUTURE	FUTURE DEVELOPMENT
15	THOMAS WALKER	CITY OF WEST POINT AND CLAY COUNTY, MS	0.8	N/A	FEE SIMPLE	FUTURE	FUTURE	FUTURE DEVELOPMENT
16	JOHN & BEVERLY FRESHOUR	CITY OF WEST POINT AND CLAY COUNTY, MS	0.1	N/A	FEE SIMPLE	FUTURE	FUTURE	FUTURE DEVELOPMENT

\*PART OF TRACT 3



	LEGEND	
	EXISTING	ULTIMATE
INTERIOR TRACT LINE	---	---
RUNWAY SAFETY AREA (RSA)	--- RSA ---	--- RSA ---
RUNWAY OBJECT FREE AREA (OFA)	--- OFA ---	--- OFA ---
RUNWAY OBSTACLE FREE ZONE (OFZ)	--- OFZ ---	--- OFZ ---
RUNWAY PROTECTION ZONE (RPZ)	---	---
BUILDING RESTRICTION LINE (BRL)	--- BRL ---	--- BRL ---
APPROACH SURFACE	---	---
THRESHOLD SITING SURFACE	---	---
GLIDE SLOPE QUALIFICATION SURFACE	---	---
DEPARTURE SURFACE	---	---
AIRPORT REFERENCE POINT	⊙	◇
AIRPORT PAVEMENT	▬	▬
AIRPORT BUILDINGS	■	■
OTHER BUILDINGS	■	N/A
AIRPORT PROPERTY LINE / EASEMENTS	--- P ---	--- P ---
FENCE	--- F ---	---
ROADS	---	---
GROUND ELEVATION CONTOURS	---	N/A
ROTATING BEACON	★	N/A
PAPI	■ ■ ■	□ □ □
THRESHOLD LIGHTS	● ● ●	○ ○ ○
REIL	N/A	△
UTILITY POLE	⊖	N/A
TO BE REMOVED	N/A	▨

REVISION INFORMATION	
REV.	DESCRIPTION
DR.	DATE
JEC	12-9-2016
ADB	9-6-2017
DKS	EXHIBIT "A" LINE REVISIONS

9/6/2017 8:09:08 AM  
\$ INSTR\$  
\$ USER\$  
\$ TBL\$